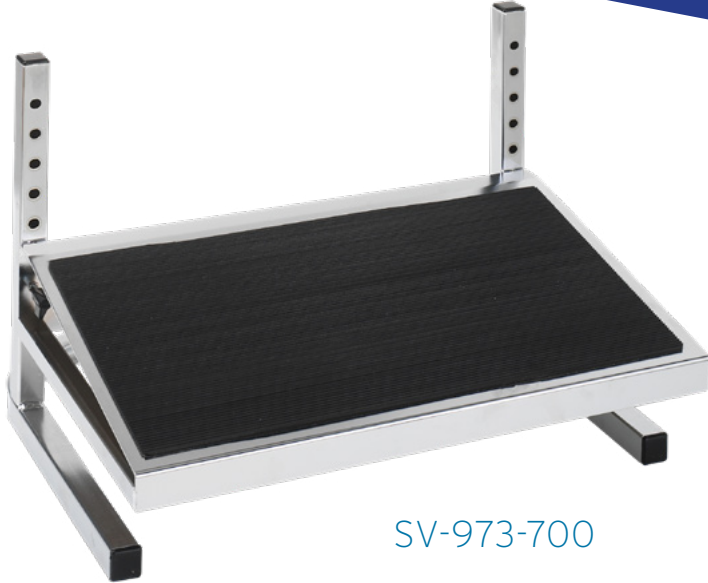




The Safer Choice

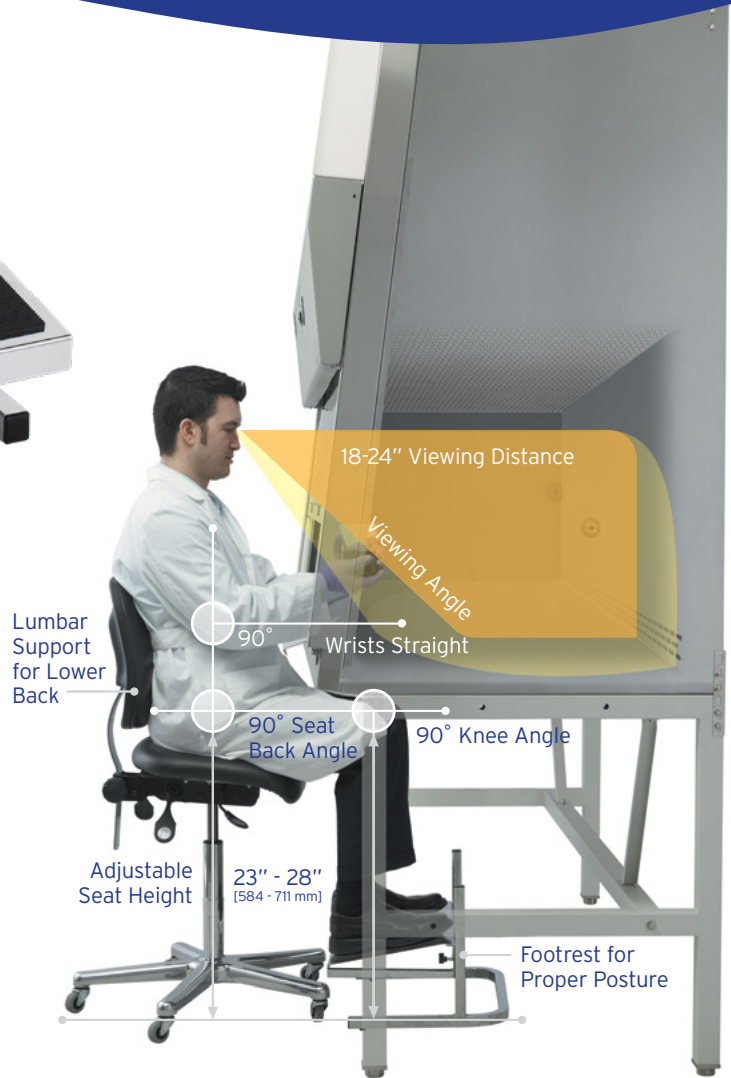
For Your Comfort



SV-973-700

Adjustable Ergonomic Footrest

NuAire Laboratory Equipment Boasts Superior Ergonomics Without Compromising on Safety. Technicians often spend eight or more hours sitting in front of a biosafety cabinet; this makes all day comfort a necessity. Utilizing an ergonomically designed chair combined with the NuAire adjustable footrest will provide you with optimal back and leg support to comfortably work all day. Get yours today for improved comfort and ergonomics!



SV-973-700 Adjustable Footrest	
Nominal Size	20" [508 mm]
Height Range	3 - 11" [76 - 279 mm] (in 1" [25 mm] Increments)
Footrest Angle	10° Slope
Product Dimensions (WxDxH)	20 x 11 x 12 in [508 x 279 x 305 mm]
Product Material	16-gauge Stainless Steel Frame w/ Rubber Pad
Net Weight	24 lbs [10.9 kg]
Warranty	13 Years