

NUAIRE®

LABGARD[®] ES AIR

NU-543 CLASS II TYPE A2 BIOLOGICAL SAFETY CABINET



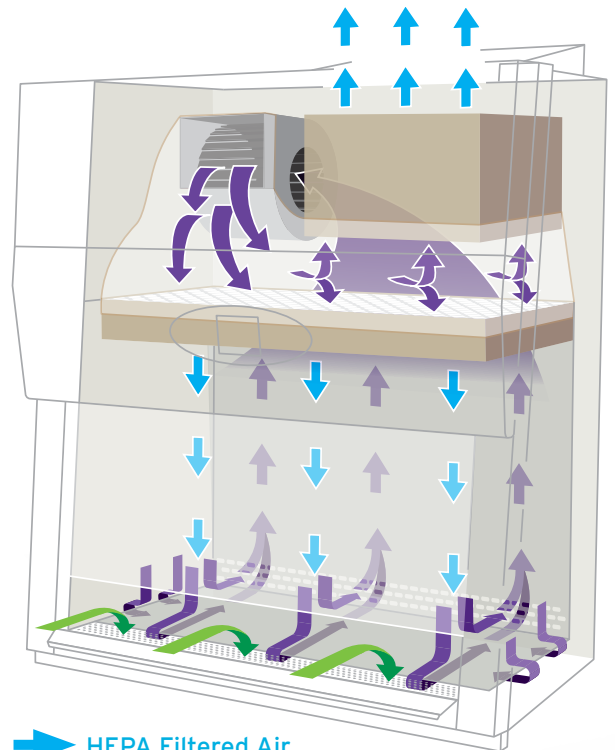
The LabGuard[®] ES (Energy Saver) AIR Model NU-543 Class II, Type A2 Biological Safety Cabinet (BSC) is a bench/table top model with available base stand options. The NU-543 offers economical operation through the use of our single ultra-high efficiency DC ECM blower to reduce energy consumption and maximize filter load capacity. The NU-543 also offers the greatest degree of versatility of available options, accessories, and access openings of 8, 10, or 12 inches [203, 254, or 305 mm]. As a class II Type A2, the NU-543 can be recirculated back into the room or configured with a canopy transition to an external exhaust blower. The FlowGard™ central control system utilizes a single airflow sensor with dual-thermistors to monitor and display the airflow speed in real-time.



environmental,
product & personnel
protection



FlowGard™ Electronic Control System



- ➡ HEPA Filtered Air
- ➡ Contaminated Work Zone Air
- ➡ Contaminated Room Air

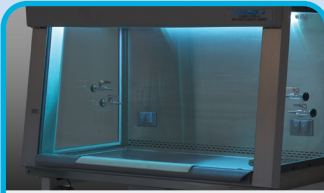
Popular Features & Accessories



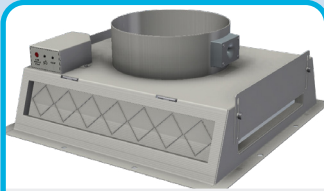
Removable Prop-Up Work Tray



Silicone-Padded Elbow Rests



Interior UV Light



Variable Flow Canopy (VFC) Exhaust Transition w/ Alarm



Cord Pass-through (NSF-Approved)

NU-543 Features & Specifications

Class, Type	Class II, Type A2
Cabinet Style	Bench Top w/ Optional Base Stand
Nominal Widths	3, 4, 5, 6 ft [0.9, 1.2, 1.5, 1.8 m]
Workspace Dimensions (W x D x H)	(34.375 / 46.375 / 58.375 / 70.375) x 25.75 x 28.5 in [(873 / 1178 / 1483 / 1788) x 654 x 724 mm]
Exterior Dimensions (W x D x H)	(41.6 / 53.6 / 65.6 / 77.6) x 32.1 x 61 in [(1057 / 1362 / 1669 / 1972) x 817 x 1546 mm]
Net Weight	410 - 640 lbs [186 - 290 kg]
Certifications	NSF / ANSI 49, UL listed
Access Opening	8, 10, 12 in [203, 254, 305 mm]
Electrical Requirements	115 VAC / 60 Hz
Filter Load Capacity	250%
Airflow	105 fpm [0.53 m/s] Dynamic Inflow, 60 fpm [0.30 m/s] True Laminar Downflow ISO Class 5 Air Protection
Supply Filter	3 in [76 mm] HEPA 99.99% Efficient @ 0.3 microns
Exhaust Filter	11.5 in [292 mm] HEPA 99.99% Efficient @ 0.3 microns
Control System	FlowGard™ with Audible/Visual Alarm
Airflow Sensor	IntelliFlow™ Airflow Sensor
Lighting	LED Ultraviolet (UV) Light Option
Niteware™ Compatible	Yes
Password Protection	Yes
Decontamination Mode	Decon101™
Noise Level	Up to 63 dba*
Construction	Removable Stainless Steel Coved Work Tray with Prop-Up Stand 2 Back-Wall Electrical Outlets 3 Service Couplings and 1 Service Valve (Right/Left Sidewalls) Single Cord Pass-Through Port (Right Sidewall; NSF-Approved) Coved Interior Corners for Easy Cleaning Monolithic 16/18 gauge Stainless Steel Welded Pressure Tight Construction Recessed & Removable Front Intake Grill Stainless Steel Spill Trough w/ Drain Valve AttenuMont™ Vibration Control Support System Permanent Positive Pressure Plenum w/ Quick Release Supply Filter Removal Frameless Easy-to-Slide Viewing Window w/ Optional Stainless Steel Edge Protector Heavy Duty Plastic Armrest w/ Stainless Steel Option IV Bar w/ 3 Height Locations, 6 SST Hooks Glass Sidewalls Backwall Cutout for PC Viewing Monitor 3/8" Soft Copper, 3/8" Black Pipe (Gas Only), or 1/2" Rigid Copper Plumbing Additional Service Valves, Couplings, Cord Pass-Through Ports, and/or Outlets
Base Stand Accessories	Telescoping Adjustable Base Stand w/ Leg Levelers or Casters Motorized Adjustable Base Stand w/ Leg Levelers or Casters
Accessories	Variable Flow or Fixed Exhaust Canopy Transition Adjustable Ergonomic Footrest Lay-In Charcoal/Purafil Transition Options 8 or 12 inch [203 or 305 mm] Base Stand Storage Shelves (Telescoping Only) Ergonomic Stainless Steel Turntable Silicone Cushioned Movable Elbow Rests
	Standard Feature
	Optional Feature

*Margin of error: ±2 dba, measurement performed per ISO 11201:2010 in normal running mode



To Learn More or Request a Quote:

Visit: www.nuaire.com

or Call: 1-763-553-1270

Toll Free: 1-800-328-3352



*Contact your local NuAire distributor for international warranty details.

